

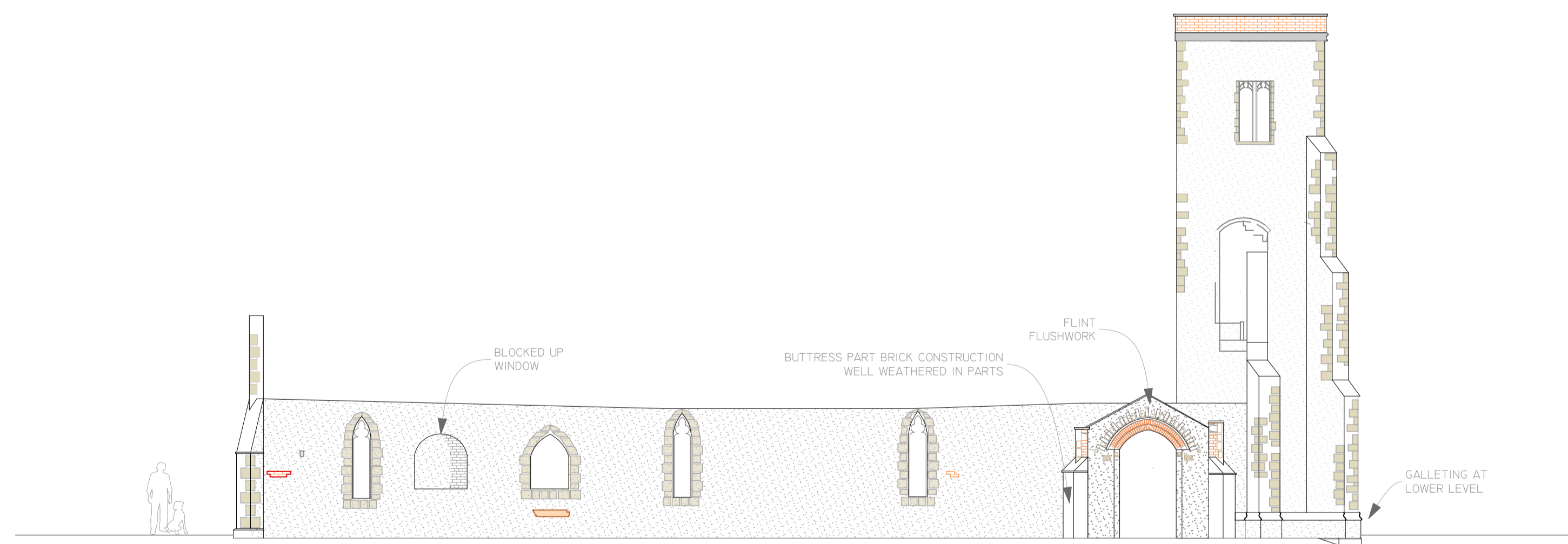
PLAN 1:100



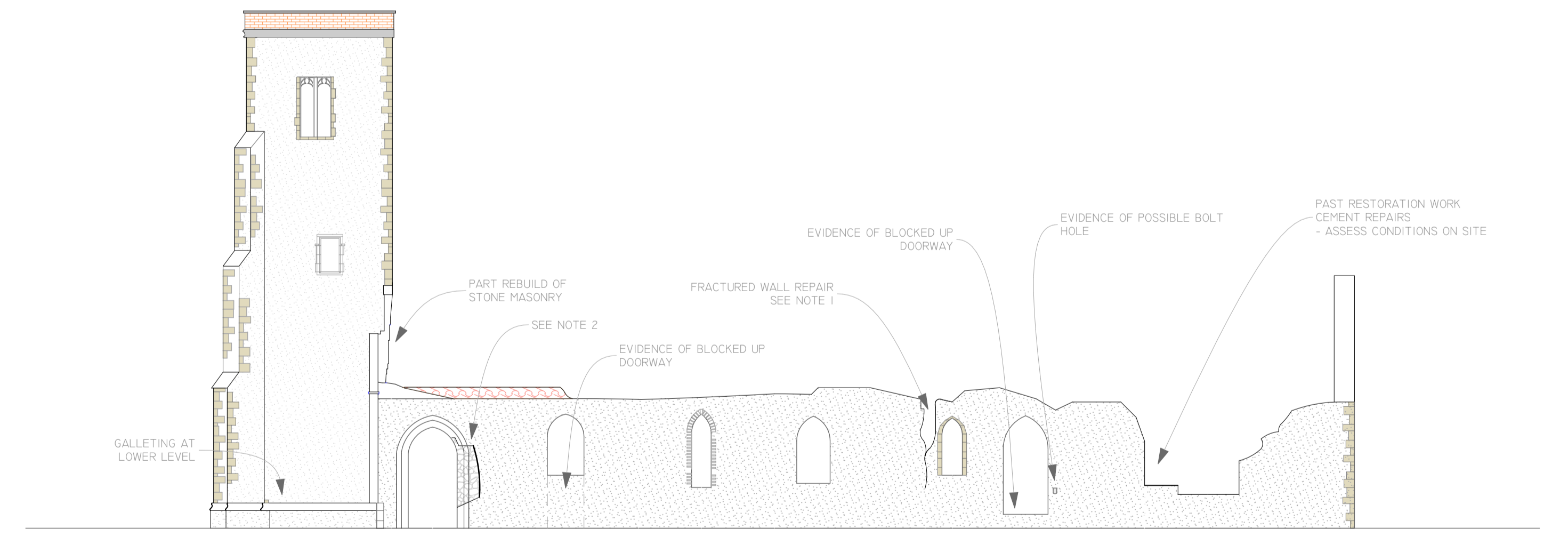
WEST EXTERNAL ELEVATION 1:100



EAST EXTERNAL ELEVATION 1:100



NORTH EXTERNAL ELEVATION 1:100



SOUTH EXTERNAL ELEVATION 1:100

1. FRACTURED WALL

FRACTURE REPAIR TO BE COMPLETED BY MEDIEVAL MASONRY LTD.

MARCH 2015
REMOVAL OF ALL IVY AND VEGETATION.
BINDING WALLS WITH HELIFIX TIES, AS DISCUSSED WITH STRUCTURAL ENGINEER AND CONSERVATION OFFICER.

2. SOUTH DOORWAY

MEDIEVAL MASONRY LTD TO CARRY OUT REPAIRS.
PART REBUILD AROUND STOUP, ANCASTER STONE USED FOR NEW STONEMWORK.

REVISION 1



GREAT YARMOUTH PRESERVATION TRUST
ROOM 3.5
GREYFRIARS HOUSE
GREYFRIARS WAY
GREAT YARMOUTH
NR30 2QE
TEL: 01493 864195
DARREN@GREAT-YARMOUTH.GOV.UK

PROJECT:

ST. MARGARET'S CHURCH RUINS
HOPTON, NORFOLK

FUNDED BY:



TITLE:

PLAN AND EXTERNAL ELEVATIONS



SCALE: 1:100

DRAWN BY: DESI KUSHELIEVA

DATE: MAY 2015

REVISION 1