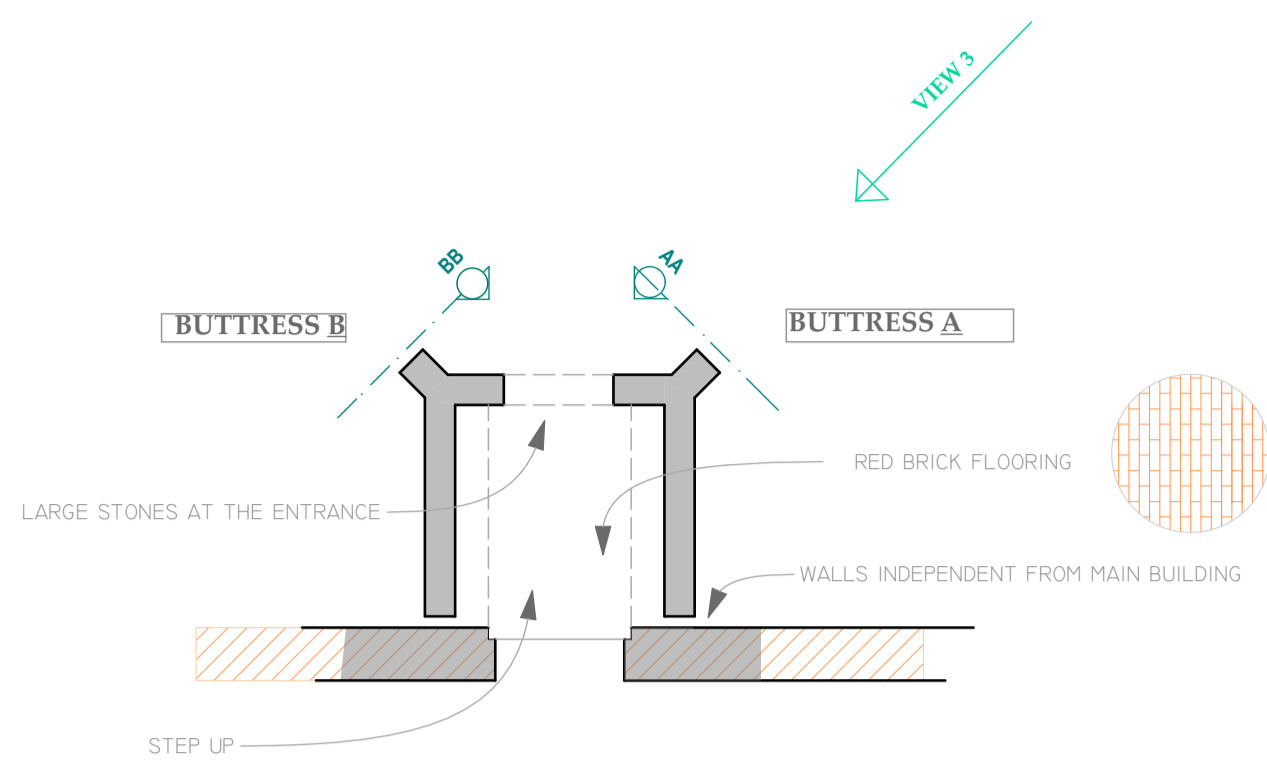
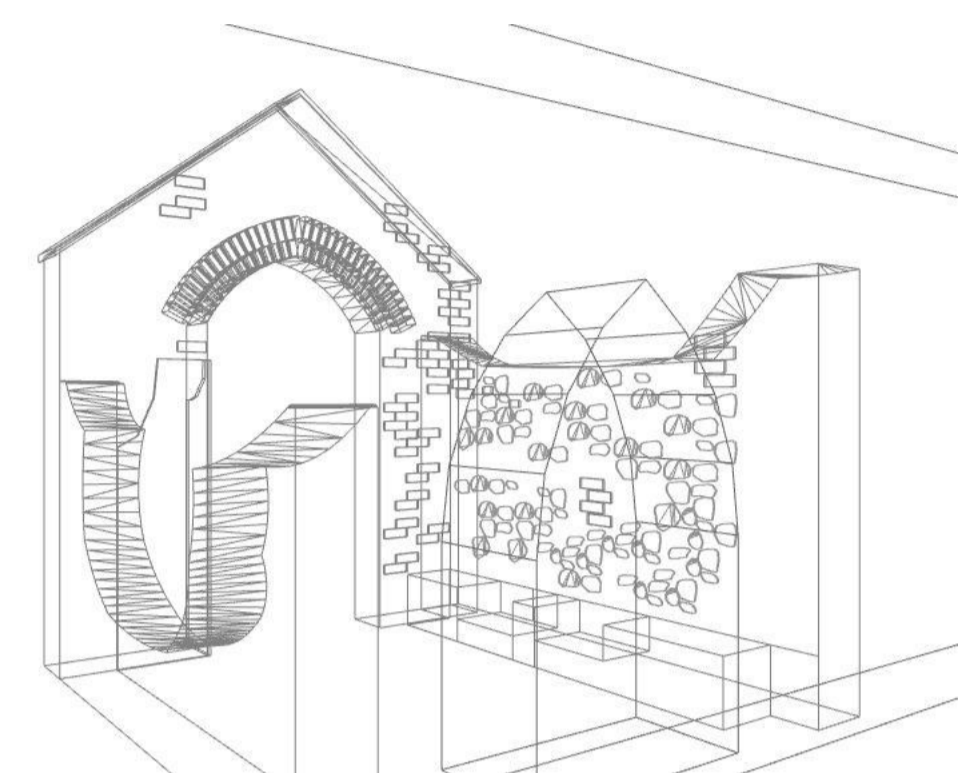


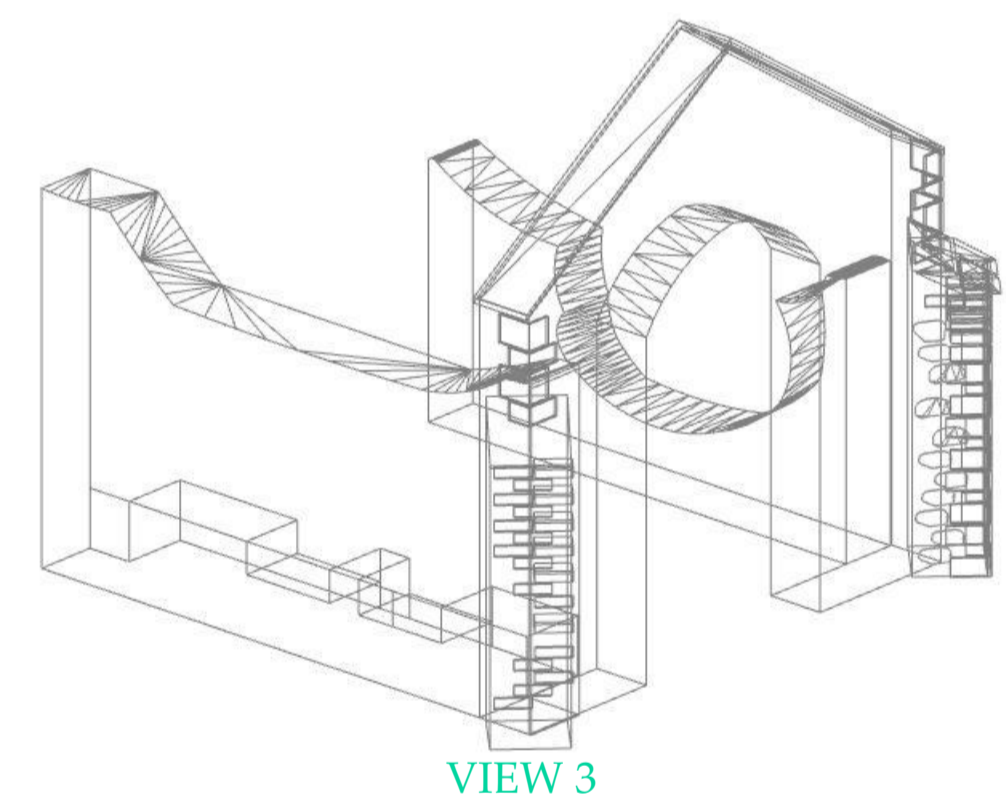
VIEW 1 TO PORCH AREA



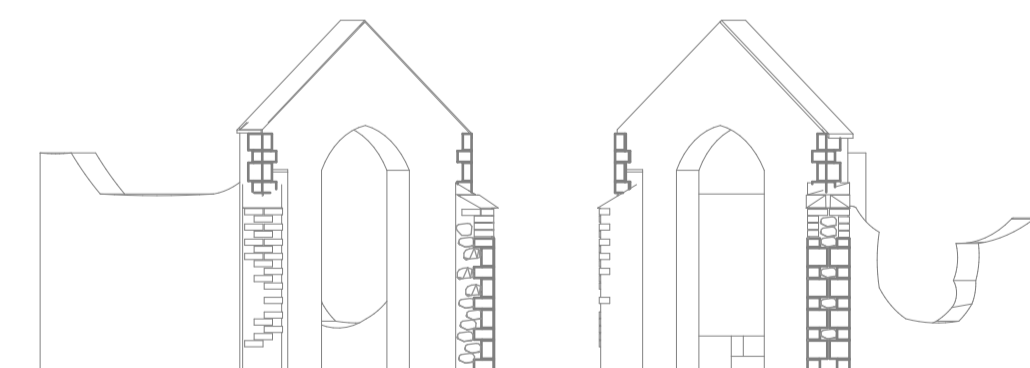
PORCH PLAN 1:100



VIEW 2 TO PORCH AREA

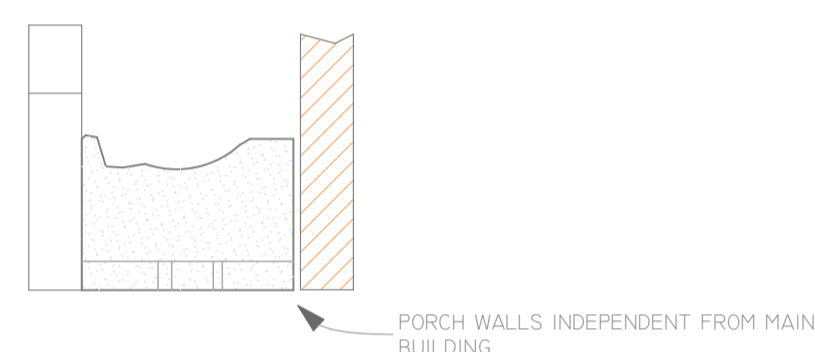


VIEW 3

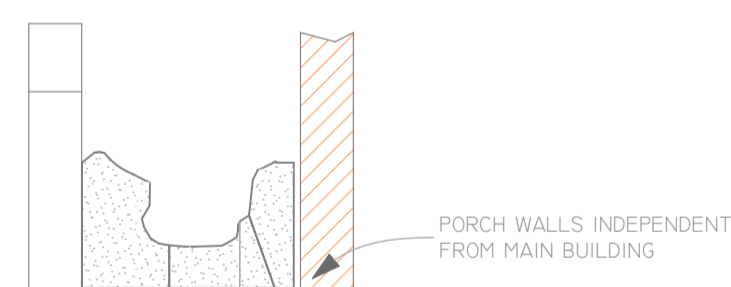


BUTTRESS A

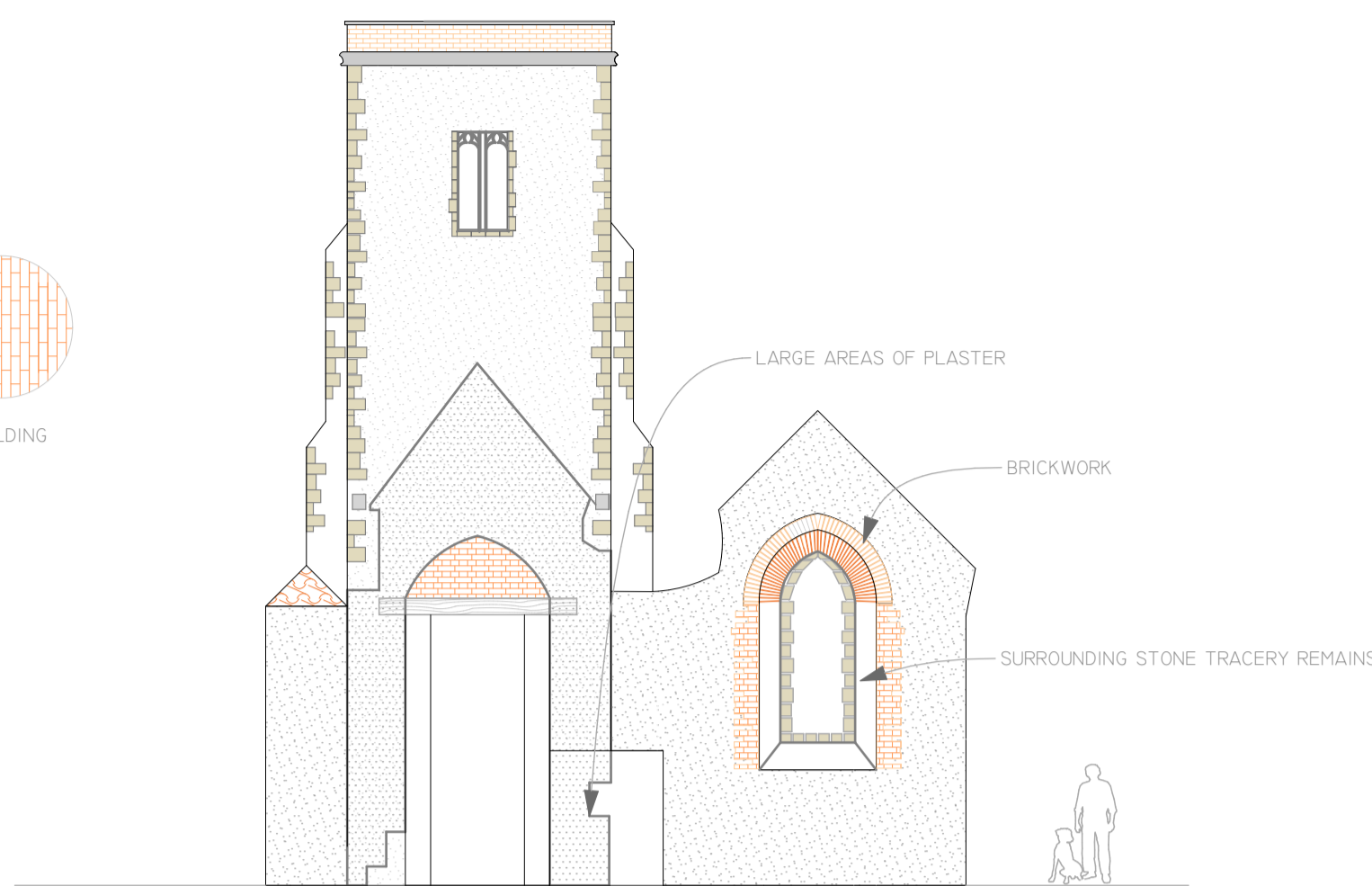
BUTTRESS B



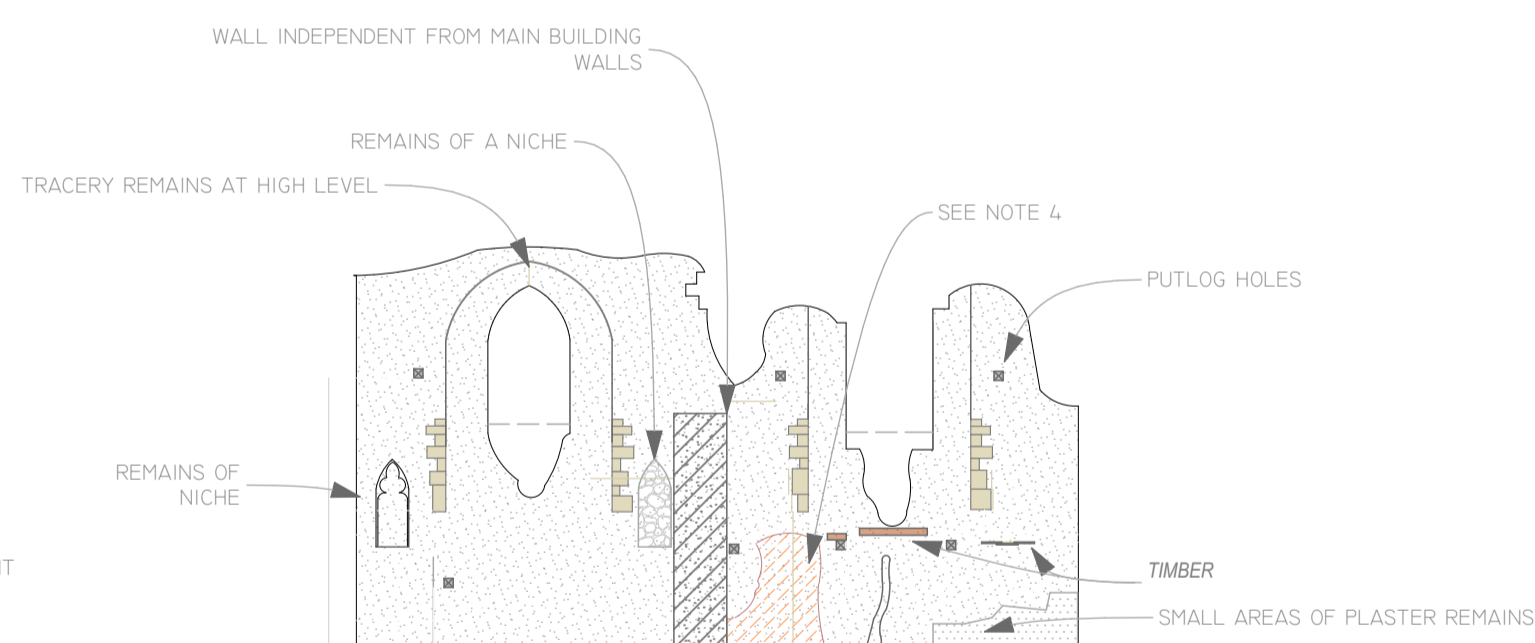
EAST INTERNAL PORCH WALL 1:100



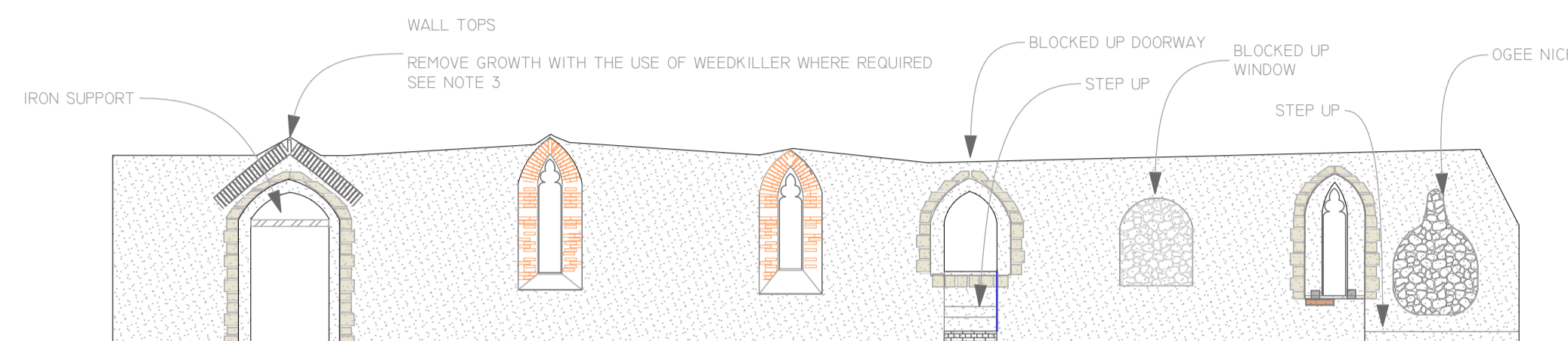
WEST INTERNAL PORCH WALL 1:100



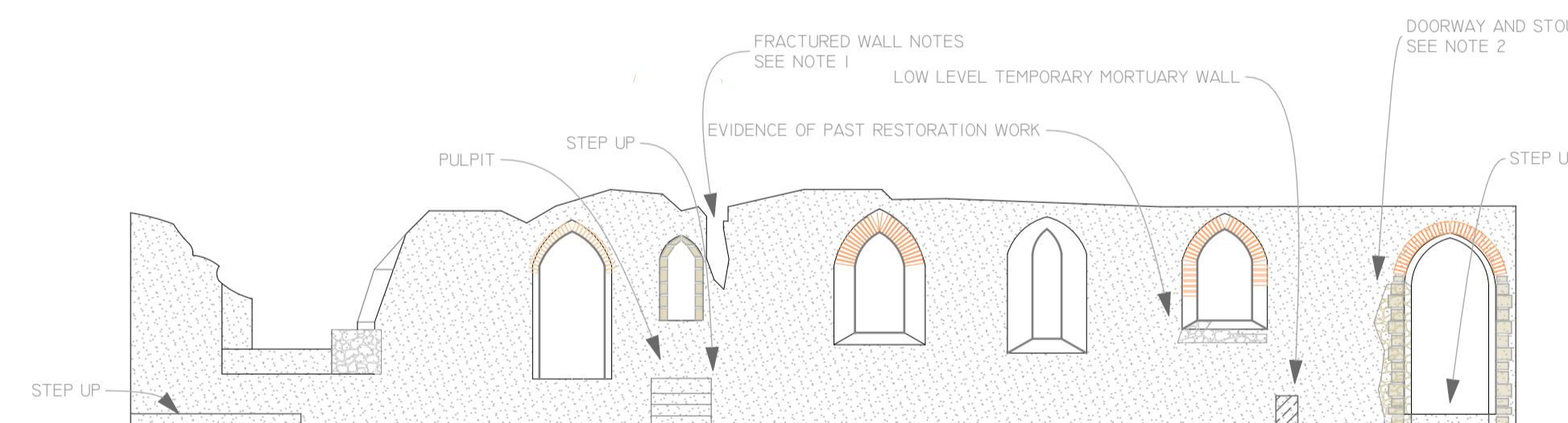
WEST INTERNAL ELEVATION 1:100



EAST INTERNAL ELEVATION 1:100



NORTH INTERNAL ELEVATION 1:100



SOUTH INTERNAL ELEVATION 1:100

1. FRACTURED WALL

FRACTURE REPAIR TO BE COMPLETED BY MEDIEVAL MASONRY LTD.

MARCH 2015
REMOVAL OF ALL IVY AND VEGETATION.
BINDING WALLS WITH HELIFIX TIES, AS DISCUSSED WITH STRUCTURAL ENGINEER AND CONSERVATION OFFICER.

2. SOUTH DOORWAY

MEDIEVAL MASONRY LTD TO CARRY OUT REPAIRS.
PART REBUILD AROUND STOUP, ANCASTER STONE USED FOR NEW STONEMWORK.

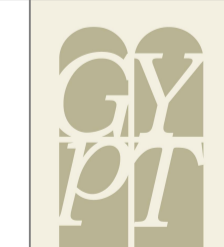
3. WALL TOPS

FOR ALL WALL TOPS :
- REMOVE VEGETATION
- USE WEEDKILLER WHERE NECESSARY
- REMOVE ALL SOIL AND LOOSE MASONRY
- CLEAN DOWN AND REBUILD WHERE NECESSARY TO FRONT FACING.
- TOPS TO BE CAPPED / ROUGH RACKED IN FLINT USING 1:3 MIX RATIO OF NHL 3:5 SHARP SAND (IF DIRECTED INCLUDE ADDITIONAL COARSE AGGREGATE)

4. HOLE IN WALL

REMOVE DRY STACKED STONES AND REBUILD USING COMBINATION OF LARGE STONES AND HYDRAULIC LIME NHL 2.5 USED FOR REBUILDING

REVISION 1



GREAT YARMOUTH PRESERVATION TRUST
ROOM 3.5
GREYFRIARS HOUSE
GREYFRIARS WAY
GREAT YARMOUTH
NR50 2QE
TEL: 01493 846195
DARREN@GREAT-YARMOUTH.GOV.UK

FUNDED BY:



PROJECT:
**ST. MARGARET'S CHURCH
RUINS
HOPTON, NORFOLK**

TITLE:
**INTERNAL ELEVATIONS AND PORCH
AREA DETAILS**

SCALE: 1:100

DRAWN BY: DESI KUSHELIEVA

DATE: MAY 2015

REVISION 1