

Great Yarmouth 1930

● Tramways

● Railways



1 Vauxhall Station



2 Vauxhall Engine Shed
and goods yard



3 Vauxhall Bridge



4 North Quay



5 Lacons Brewery



6 Suspension Bridge



7 North Tower



8 Market Place



9 Regent Road



10 The Aquarium



11 The Jetty and Marine Parade



12 Wellington Pier



13 The Hippodrome



14 Fishwharf



15 King Street



16 Regent Street



17 Hall Quay



18 South Quay



19 Haven Bridge



20 Southtown Station



21 Southtown to Gorleston
Tramway



22 Breydon Swing Bridge



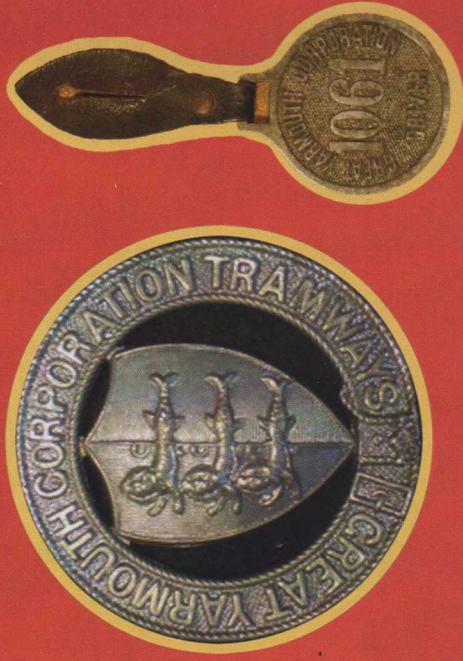
23 Great Yarmouth Corporation
Tramways Depot



24 Beach Station



This map highlights the tramways of Great Yarmouth's past along with the town's previous railway networks and stations.



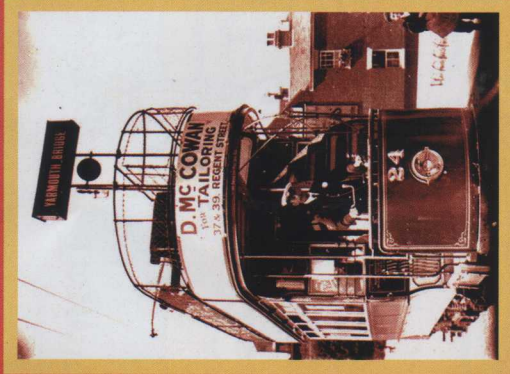
By scanning the bar codes on this trail map you can view photos of how the tramways, the railways and the town once looked.

Vauxhall Links **All Our Stories** project explores, celebrates and raises awareness of Great Yarmouth's rich transport heritage

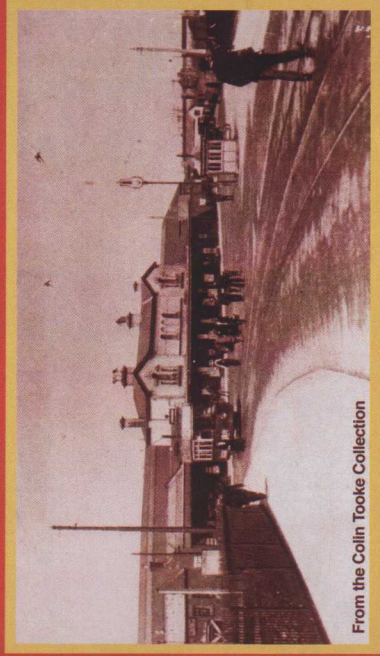
visit: <http://vlinksallourstories.wordpress.com> and <http://greatyarmouthtramtrail.weebly.com>



Vauxhall Links is a group set up by Miriam Kikis who lead a campaign to save Vauxhall Bridge for the last ten years, and fundraised towards the restoration of the Vauxhall Bridge a Grade 2 Listed Building of Architectural and Historic Interest. Miriam's property looks over the bridge and she believes that the bridge should be preserved and painted, (something which is currently in progress). The restoration of the Bridge is happening with support from Fair Share money, Asda Stores, Garfield Foundation, Vauxhall Links fund raising, Norfolk County Council, Great Yarmouth Borough Council and Railway Heritage.

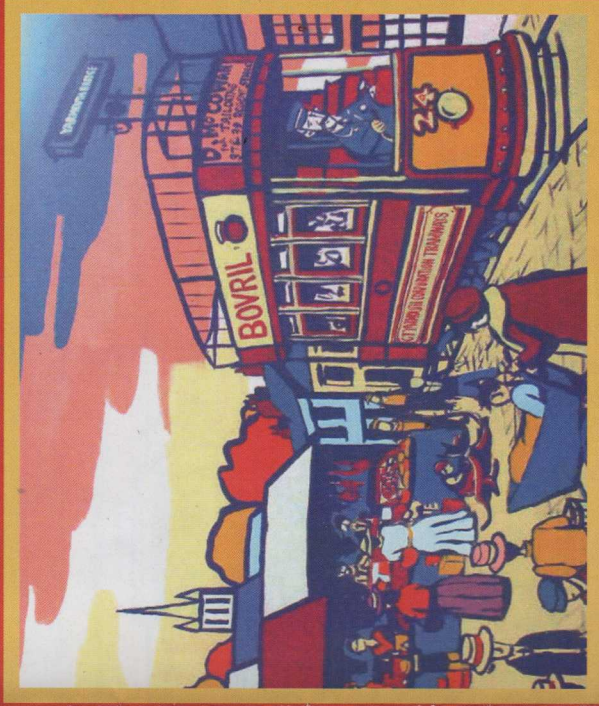


From 1902 to 1932 Great Yarmouth had an electric tramway



From the Colin Tooke Collection

Trams ran across the town from Vauxhall Station to the Winter Gardens



Tram Trail

Trace the tracks that took the trams to town



LOTTERY FUNDED